

TRAKKER

H
E
A
V
Y
D
U
T
Y
R
A
N
G
E



IVECO

**A NEW CLASS
FOR THE OFF-ROAD SECTOR**



The TRAKKER is Iveco's new off-road truck. It combines the performance and robustness of a construction vehicle with the comfort of an on-road chassis. TRAKKER uses advanced technology giving exceptional reliability with features to suit all types of terrain and usage.

TRAKKER is born from a concept that is as simple as it is effective: fulfilling the needs of the driver to the maximum.

TRAKKER optimizes productivity without ever giving up on the strength and reliability required from a truck that works on difficult terrains and carries heavy loads. Its performance remains high year after year.





The formed metal bumper has rounded edges and is made in three pieces for greater safety and easy repair.



DRIVING OFF-ROAD BECOMES AS COMFORTABLE AS DRIVING ON-ROAD

The TRAKKER cab is a product of Iveco's continuous innovation.

Style and comfort match those of on-road vehicles while meeting the specific needs of off-road ones.

Following on the success of Iveco's earlier off-road trucks, the TRAKKER further increases comfort and ergonomics. Starting from its design, everything expresses driving pleasure and safety. The attention to details ensures maximum driver comfort while guaranteeing highest work performance.





The storage compartments are practical and useful.



Standard pneumatic adjustable driver's seat and steering column ensure the optimum driving position can be achieved.

- **MAXIMUM ERGONOMICS** of the driving position
- **QUALITY OF MATERIALS** which guarantees longevity



Total ergonomics for an untroubled drive.

The TRAKKER cab is an ideal work environment, the product of Iveco's years of experience, and making use of suggestions from professional drivers in the sector. The driving position can be personalized more than ever: the pneumatic seat, together with the steering wheel which can be adjusted for height and angle, ensure that the perfect driving position can be found. Also, excellent visibility ensures that even the most complicated manoeuvres can be carried out in complete safety. Driving productivity is, therefore, guaranteed.

The quality of the interior exceeds even the most stringent standards for strength and practicality. Every detail has been designed to be within easy reach. The controls for the electric windows are conveniently positioned on the doors. The clothes hanger and mobile phone pocket are practically situated. There is also a storage unit and a writing pad mounted in the middle of the rear wall.



**Functional instruments
for a safe drive.**

The control panel is within easy reach of the driver to facilitate vehicle handling even in the most arduous condition.

Everything is robust, fully visible and convenient to use.

The on-board electronics is very user-friendly.

The ergonomic dashboard houses the instruments and a digital screen upon which all necessary information can be

seen: from the vehicle diagnostics to its fuel consumption. It is arranged in such a way as to enable easy, immediate reading of the driving parameters.

The buttons for the audio equipment (radio and CD) and the on-board computer are incorporated into the steering wheel. On the right-hand side, incorporated into the drive-diverter, is the multipurpose stalk to activate the engine brake, Intarder and cruise control.





“Soft-touch” buttons; the multipurpose stalk for the engine brake/Intarder is conveniently placed behind the steering wheel.

- **ERGONOMIC DASHBOARD** housing easily activated controls
- **DIGITAL SCREEN** supplying the right information in a simple way



The first step is flexible, made of a particularly durable material capable of absorbing shocks and returning to its original position.

The AT cab is designed for long trips.



Three cab versions to cover all requirements.

The short, low-roof Active Day (AD) cab has been designed for daily journeys. When long distances are to be travelled, however, the best choice is the long cab, Active Time (AT), available with high or low roof, and one or two bunks.

Cab access has been improved thanks to a new design. The flexibility of the first step and the grip of the others, lit by spot lights when necessary, make access easy and safe.

An inspection step (optional) is situated on the side of the cab to check the load.

- **THREE CAB CONFIGURATIONS: ACTIVE DAY and ACTIVE TIME with a high or low roof, to cover all requirements**
- **GREAT ACCESSIBILITY ensured by a new sturdy first step**

- **CAB SUSPENSION**
as for on-road vehicles
- **PNEUMATIC SUSPENSION**
available for tractors
with long cab
- **SOUNDPROOFING AND
HEAT INSULATION**
guaranteed by new
solutions



More work less stress.

Without comfort there is neither productivity nor safety. That is why the TRAKKER was born: to reach levels of comfort that are absolutely excellent thanks to the adoption of a new cab suspension derived from on-road vehicles. The solution, already tested and reliable, is calibrated to absorb both the hardships of off-road driving and the unevenness of the road. Pneumatic suspension is also available for the long-cab AT tractors. On trips of several days the driver can still enjoy maximum levels of comfort.

Thanks to the use of new materials and devices, the level of heat insulation and soundproofing is able to keep physical fatigue to a minimum even after long working hours.



Every detail, from the supplying of a new air-conditioning unit to the careful arrangement of the air vents, allows the driver to work in the best conditions on every trip, in every environment.

BUSINESS IS RUNNING AT FULL SPEED

The TRAKKER is powered by a Cursor heart, the greatest expression of Iveco's cutting-edge motor engineering. The Cursor engine offers high, constant torque at a wide range of rpms. Strong and economical, with exceptional power, it is an engine that is always ready, and which makes driving flexible and soft. Advanced and technological, respectful of the increasingly restrictive environmental standards, the Cursor is an engine that will contribute to improve your business.







Two Cursor engines to meet every need.

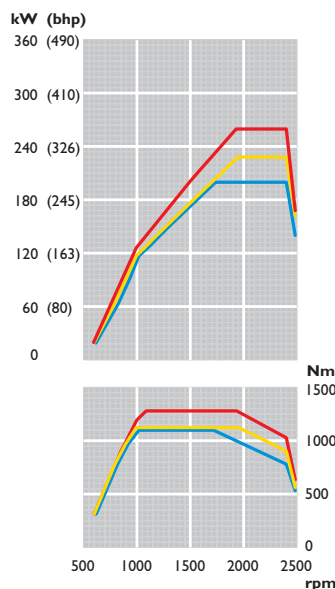
The Cursors 8 and 13 offer six power levels: 270, 310, 350 HP and 380, 440, 480 HP respectively. The Cursor 8 is designed for vehicles that must maintain a reduced tare mainly for road use.

The 12.9 litres of the Cursor 13 are ideal for particularly arduous missions requiring even more power.

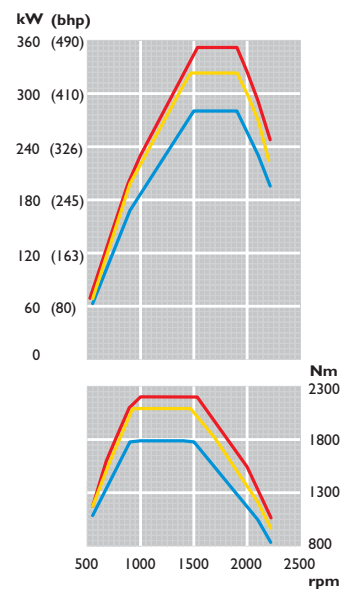
The high and wide torque, available even at low engine speeds, guarantees good pickup in the most difficult conditions, reducing wear and tear

- **EXCELLENT DRIVEABILITY and GREAT PICKUP** thanks to high torque from low engine speeds and over a wide range of rpms
- **REDUCED CONSUMPTION** ensured by the efficiency of the engines and the driveline

CURSOR 8



CURSOR 13





- **MECHANICAL GEARBOXES** with **SERVOSHIFT** to facilitate gear changes
- **12-speed AUTOMATIC GEARBOX** on **Cursor 8** and **Cursor 13**



The EuroTronic gearbox can operate completely automatically by simply pressing a button on the left of the lever. In this configuration it is the electronic control unit that governs gear changing.

on the clutch and ensuring excellent drivability.

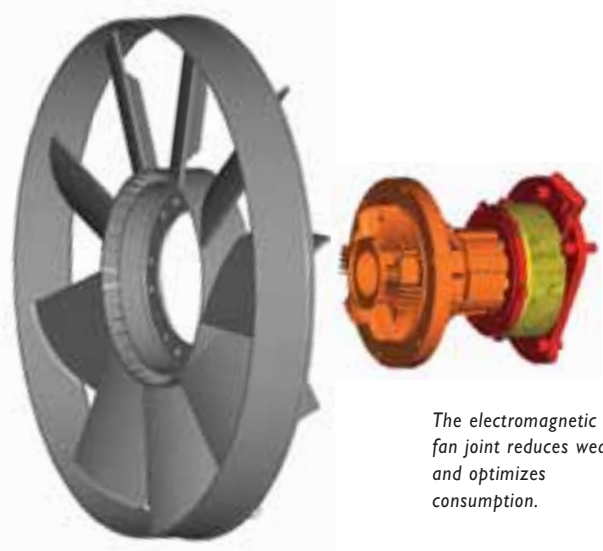
The Cursor engines are equipped with an efficient and reliable 2-speed electromagnetic fan joint which helps to reduce fuel consumption.

Power-assisted mechanical gearboxes for accurate, effortless gear changes.

The range starts with 9-speed gearboxes on the lower-powered engines, and goes up to the 16-speed gearboxes with Servoshift from 350 HP.

Automatic gearboxes: driveability and efficiency on every site.

The EuroTronic range of automatic gearboxes, developed together with ZF, includes a 12-speed “Over Drive” version for the Cursor 13 and a “Direct Drive” one for the Cursor 8. The speed of gear changing and the way it is managed, ensure that the correct gear is used in all circumstances, thus favouring driveability, low consumption, and less wear-and-tear on the clutch.



The electromagnetic fan joint reduces wear and optimizes consumption.

- **Wide range of REAR AXLES WITH SINGLE AND DOUBLE REDUCTION**
- **TANDEM RANGE 21 and 32 t for all applications**

A wide range of configurations.

Rear axles can be with either single or double reduction.

The hub reduction axles give outstanding ground clearance.

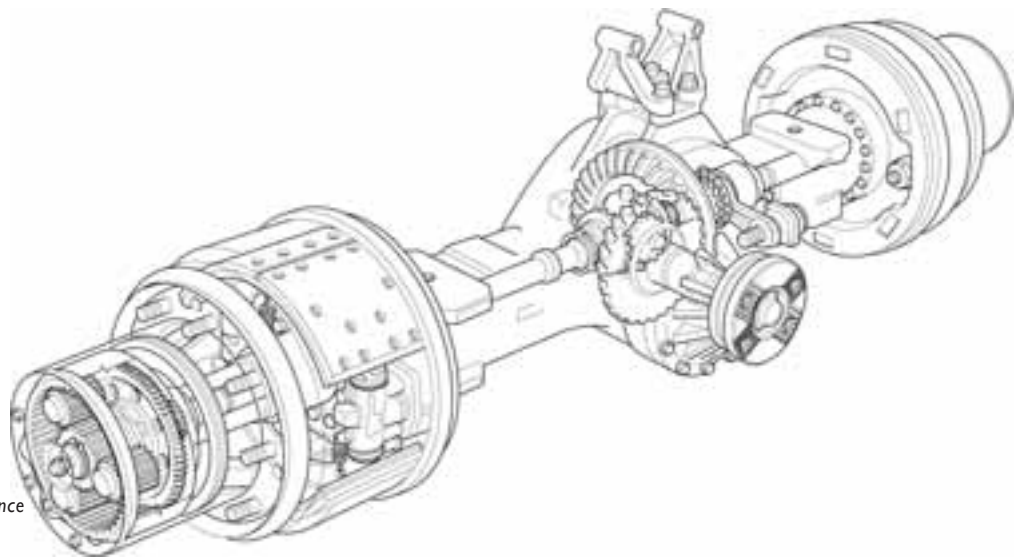
All rear axles are equipped with differential lock, tandems also have a longitudinal differential lock.

Tandems are available in 21 t with both single and double reduction and 32 t with double reduction.

Axles with single reduction are mainly used for on road/off road missions and concrete mixers, giving a reduction in vehicle tare weight with a consequent increase in payload.

There are two types of transfer boxes according to the type of engine: TC 1800 version up to 380 HP and TC 2200 for greater horsepower.

The wide range of rear-axles on offer makes it possible to choose the best version for the work the vehicle will do, thereby getting lower fuel consumption.



High ground clearance thanks to double reduction axles.



Braking in complete safety.

All the front axles are provided with self-ventilated disc brakes.

The driving axles and the rear axles are equipped with Duo-Duplex drum brakes. The distribution of the brake power according to the load is controlled by an electronic module, the EBL (Electronic Braking Limiter), as standard, incorporated into the ABS central unit, that uses signals coming from sensors on the wheels.

The Cursor engines have a decompression brake (Iveco Turbo Brake). Its efficiency is enhanced by the action of the variable geometry turbocharger. A ZF Intarder is available as an optional.

- **REDUCED BRAKES WEAR** thanks to an efficient braking system

- **EBL as standard enables brake power to be distributed according to load**

- **MULTIPLEX SYSTEM** ensures reliability and ease of diagnosis



Reliability and safety with the Multiplex system.

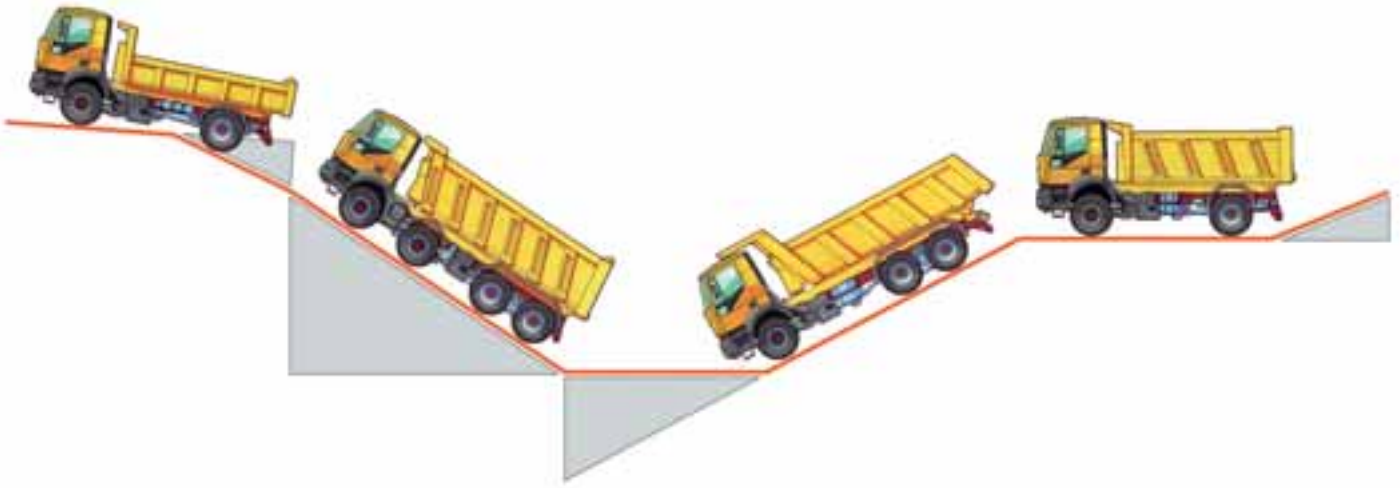
The Multiplex system, widely used for years now on on-road versions, controls all the vehicle's control units. It greatly reduces electric wiring, thus

improving reliability. It also prevents conditions of use that are potentially damaging to the vehicle and permits quick and accurate diagnosis.

THE RIGHT ANGLES FOR THE MOST DEMANDING TERRAIN

The TRAKKER was designed to carry difficult loads easily over all types of terrain. The ample ground clearance permits it to overcome even the most demanding obstacles. The robustness of the chassis, made in steel with a high yield limit, makes the TRAKKER a vehicle which sets no boundaries for your profession.





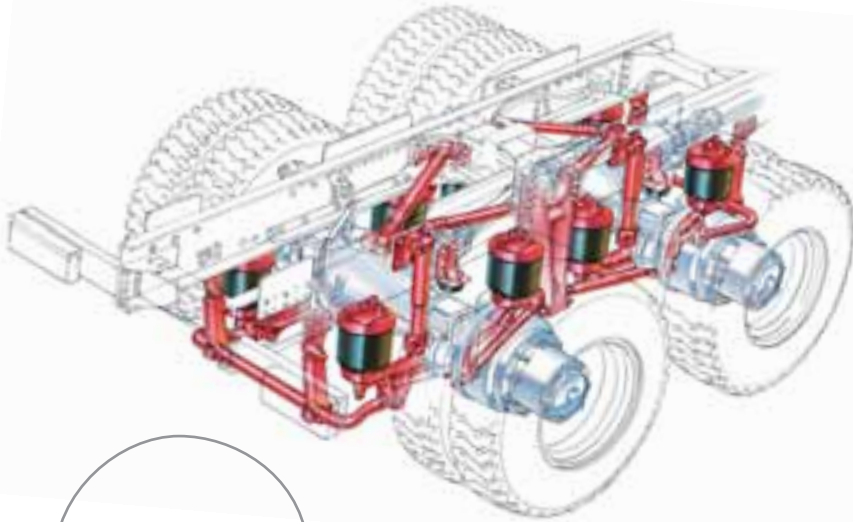
Nothing can stop a TRAKKER.

The careful arrangement of the components on the chassis, the use of axles with double reduction, and the wide range of suspensions guarantee high approach/departure angles and ground clearance. All this, together with the excellent pickup provided by the Cursor engine, enables the TRAKKER to negotiate obstacles and very steep slopes.

Parabolic, semi-elliptic springs and pneumatic suspension.

All the TRAKKERs, except those with four-wheel drive, are equipped with parabolic springs as standard, front and rear. The tare is reduced and comfort high. For more exacting missions semi-elliptic springs are available.

Rear pneumatic suspension is available on both the single and double reduction tandems for the 6x4 and the 8x4. This solution, which ensures constant stability, guarantees high comfort and is suitable for many applications.



- **PARABOLIC SPRINGS** when the tare is important, **SEMI ELLIPTIC SPRINGS** for more exacting applications
- **PNEUMATIC SUSPENSION** for tandems with single or double reduction





Narrow turning angles ensure the manoeuvrability required for getting around on site.

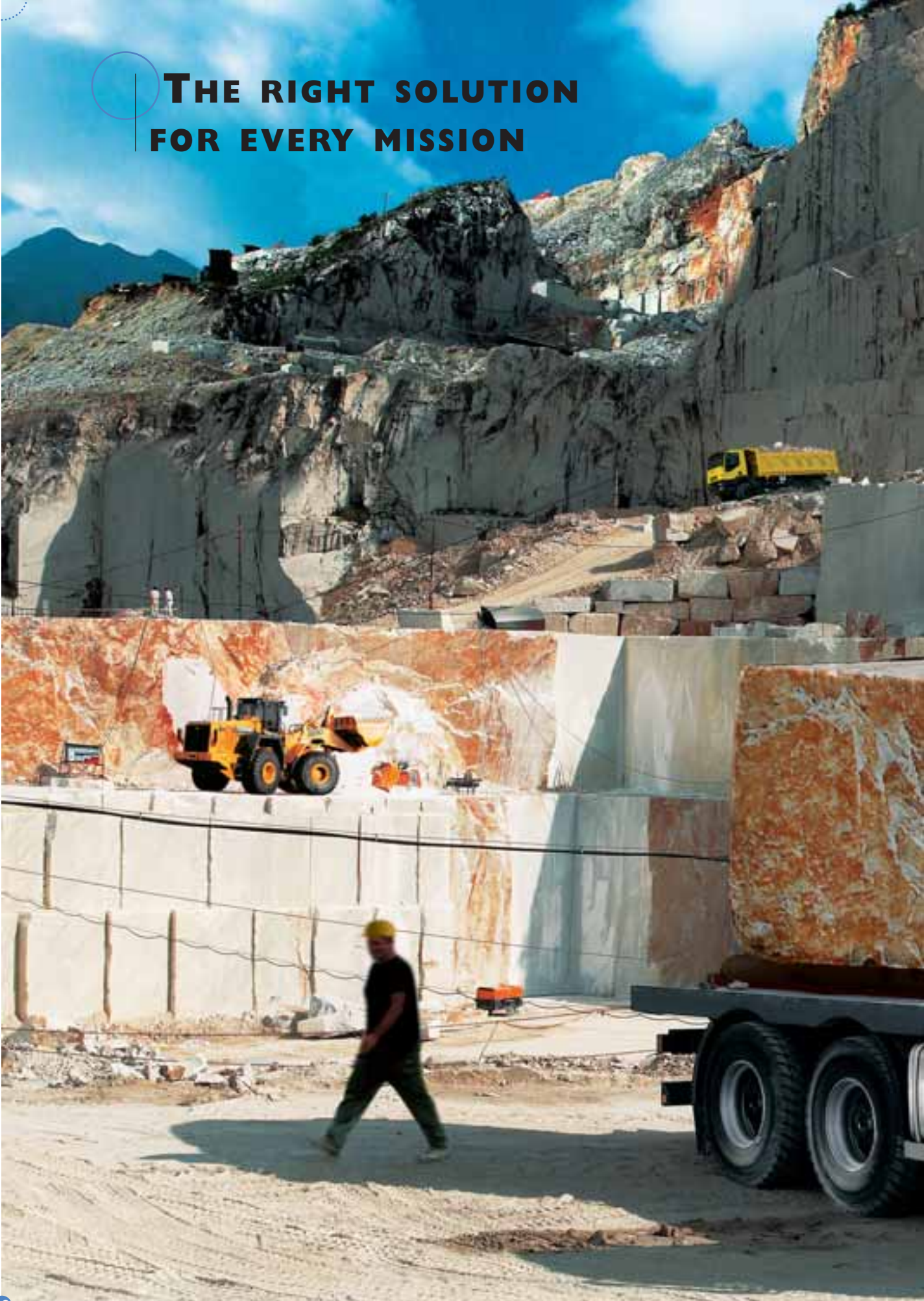
The TRAKKER chassis is made of high yield steel. According to requirements, mainframe members are available in two different thicknesses: 7.7 mm for vehicles which must have a reduced tare, or 10 mm for vehicles which require particular load capacities.

The fixing brackets are bolted and pre-arranged to facilitate the assembly of bodies in complete safety.

● **CHASSIS WITH MAINFRAME MEMBERS** from 7.7 mm to 10 mm for every type of task



THE RIGHT SOLUTION FOR EVERY MISSION



The TRAKKER offers a highly specialized response to all missions.

From moving material around in the quarry, to tasks such as snowploughing, to transporting concrete or special transport, there is a TRAKKER for everybody.





- TRACTORS: 4x2, 4x4, 6x4 and 6x6
- RIGIDS: 4x2, 4x4, 6x4, 6x6, 8x4 and 8x8
- CONCRETE MIXERS: special models in 6x4 and 8x4 configurations



A wide range to fulfil all requirements.

The TRAKKER range is made up of models with 2, 3 and 4 axles single or all-wheel drive. There are a number of engine powers, wheelbases, and suspension configurations.

Furthermore, 3 or 4-axle models are available in two versions: the “light” versions, to obtain maximum kerb weight, and the “heavy” versions, for heavy duty missions.

There are many body applications. The vehicle preparation for body fitting mainly concerns the mechanics and the electrics. These range from a wide selection of PTO to the new DMI (Data Management Interface) control unit which permits up to 3 PTO to be programmed and managed.







AN UNTROUBLED JOURNEY, WHATEVER THE TERRAIN

Iveco quality does not end with our vehicles, but continues from day to day in our relationship with our customers. The quality of our customer service is developed through a network of more than 2,500 dealers and specialized workshops. Advice is given on purchasing and financing. There are departments dedicated to service and to fleet management, with more than 20,000 people qualified in customer service. These are the exclusive Iveco guarantees that accompany and guarantee the TRAKKER's productivity.

Client Centre

The international, multilingual call centre, which operates throughout the European Union, supplies non-stop help and information.

Diagnostic Centre

Service in the workshop and at the roadside with downtime reduced to a minimum, thanks to the computerized diagnostics system Modus, IT 2000 and E.A.SY.

Financial Services

Finance and leasing with service (package contract hire) guarantee fixed running costs and an increasingly efficient and flexible fleet. This eliminates downtime for servicing, investments for the purchase, and selling the used vehicle.

Planned Servicing

Ordinary or special service contract, in the operator's own country or abroad, according to the option selected: Full, Drive-line, Eco, Engine, only service.





TRAKKER carries on the great Iveco tradition of off-road vehicles, guaranteeing high levels of driving comfort, style and performance.

Cab comfort and technology join power and robustness to create an off-road vehicle that is unique of its type, with incomparable strength and on-road comfort.

TRAKKER: the ideal work companion.

IVECO SpA
VIA PUGLIA, 35
10156 TORINO - ITALIA

www.iveco.com
www.iveco-showroom.com

Iveco - Brand & Communications Management
Publication I12420012 - Printed in Italy - 09/2004
Stamperia Artistica Nazionale - Torino
Information contained in this document is intended to be supplied by way of an indication and is not binding.